

Mersey Tidal Power

EIA Scoping Report: Volume 2b
Figures Chapters 9 - 13

September 2024

ITS TIME  FOR TIDAL



Mersey Tidal Power

EIA Scoping Report: Volume 2b Figures

Document History

Version	Author	Reviewer	Approver	Date	Comments
A0	WSP	Mersey Tidal Power	Mersey Tidal Power	13/09/24	Final

Contents

Figures

Figure 1.1 Scoping Area

Figure 2.1 Development Areas

Figure 2.2 Marine Environment

Figure 2.3 Designated Sites

Figure 2.4 Other Features

Figure 2.5 Grid Connection Points

Figure 3.1 Marine Licence Boundary

Figure 5.1 Coastal Processes Study Areas

Figure 5.2 Locations of baseline data sources

Figure 5.3 Locations of WFD Waterbodies

Figure 5.4 Coastal Processes Designated Sites

Figure 6.1 Benthic Ecology and Plankton Study Area

Figure 6.2 Intertidal habitats within the Benthic Ecology and Plankton Study Area

Figure 6.3 Intertidal habitats within the Benthic Ecology and Plankton Study Area (RSK, 2024)

Figure 6.4 EUSeaMap (2023) seabed habitats and Cefas (2024) OneBenthic faunal clusters within the Benthic Ecology and Plankton Study Area

Figure 6.5 Designated sites within the Study Area

Figure 7.1 INNS Study Area

Figure 7.2 Marine INNS identified within the INNS Study Area

Figure 7.3 Terrestrial INNS identified within the INNS Study Area

Figure 7.4 Freshwater INNS identified within the INNS Study Area

Figure 8.1 Marine Mammal Regional Study Areas - Bottlenose dolphin and Harbour porpoise

Figure 8.2 Marine Mammal Regional Study Areas - Minke whale, Risso's dolphin, Common dolphin, Harbour seal and Grey seal

Figure 8.3 Marine Mammal Study Area

Figure 9.1 Marine and Intertidal Ornithology Study Area

Figure 9.2 Marine and Intertidal Ornithology Survey Areas

Figure 9.3 Marine and Intertidal Ornithology SPA and Ramsar Sites

Figure 9.4 Marine and Intertidal Ornithology SSSIs and NNR Sites

Figure 10.1 Fish and Shellfish Study Area

Figure 10.2 Fish and Shellfish Spawning and Nursery Grounds - Cod, Mackerel, Plaice, Sandeel

Figure 10.3 Fish and Shellfish Spawning and Nursery Grounds - Sole, Whiting, Sprat, Ling

Figure 10.4 Fish and Shellfish Spawning and Nursery Grounds - Herring, Anglerfish, Spotted Ray, Thornback ray

Figure 10.5 Fish and Shellfish Spawning and Nursery Grounds - Tope shark, Spurdog

Figure 10.6 Designated Fish and Shellfish Features

Figure 10.7 Fish and Shellfish Survey Locations

Figure 11.1 Commercial Fisheries Study Area

Figure 13.1 Statutory Designated Biodiversity Sites of International Importance - Special Areas of Conservation

Figure 13.2 Statutory Designated Biodiversity Sites of International Importance – Special Protection Areas and Ramsar

Figure 13.3 Statutory Designated Biodiversity Sites of National Importance

Figure 13.4 Statutory Designated Biodiversity Sites of Local Importance

Figure 13.5 Ancient Woodland and Habitats of Principal Importance

Figure 16.1 Shipping and Navigation Study Area

Figure 16.2 Passenger and Ferry Vessel Tracks

Figure 16.3 Tanker and Cargo Vessel Tracks

Figure 16.4 Tug & Service and Recreational Vessel Tracks

Figure 16.5 Vessel Tracks by Size

Figure 17.1 Marine Cultural Heritage & Archaeology Study Area

Figure 18.1 Terrestrial Cultural Heritage & Archaeology Study Area

Figure 18.2 Terrestrial Cultural Heritage & Archaeology Study Area

Figure 21.1 Baseline Air Quality and Constraints

Figure 22.1 Noise Important Areas

Figure 22.2 Daytime Road Traffic Noise Levels, dB LAeq16hr

Figure 22.3 Night-time Road Traffic Noise Levels, dB Lnight

Figure 23.1 Geology and Ground Conditions - Study Areas

Figure 23.2 Artificial Ground

Figure 23.3 Superficial Deposits

Figure 23.4 Bedrock Geology

Figure 23.5 Agricultural Land Classification (Provisional)

Figure 23.6 Agricultural Land Classification (Post 1988)

Figure 23.7 Authorised and Historic Landfill Sites

Figure 25.1 Mersey Barrage Zone of Theoretical Visibility

Figure 26.1 Offshore Infrastructure

Figure 26.2 Onshore Renewable Energy Projects

Figure 26.3 Utilities - Electricity

Figure 26.4 Water utilities

Figure 26.5 Marine Disposal Sites

Figure 26.6 Recreational activities within the Tidal Barrage Development Area

Figure 26.7 Recreational Activities - Green Spaces

Figure 27.1 Controlled Airspaces

Figure 27.2 Radar locations

Page intentionally blank



Key
 Scoping Boundary
 Study Area

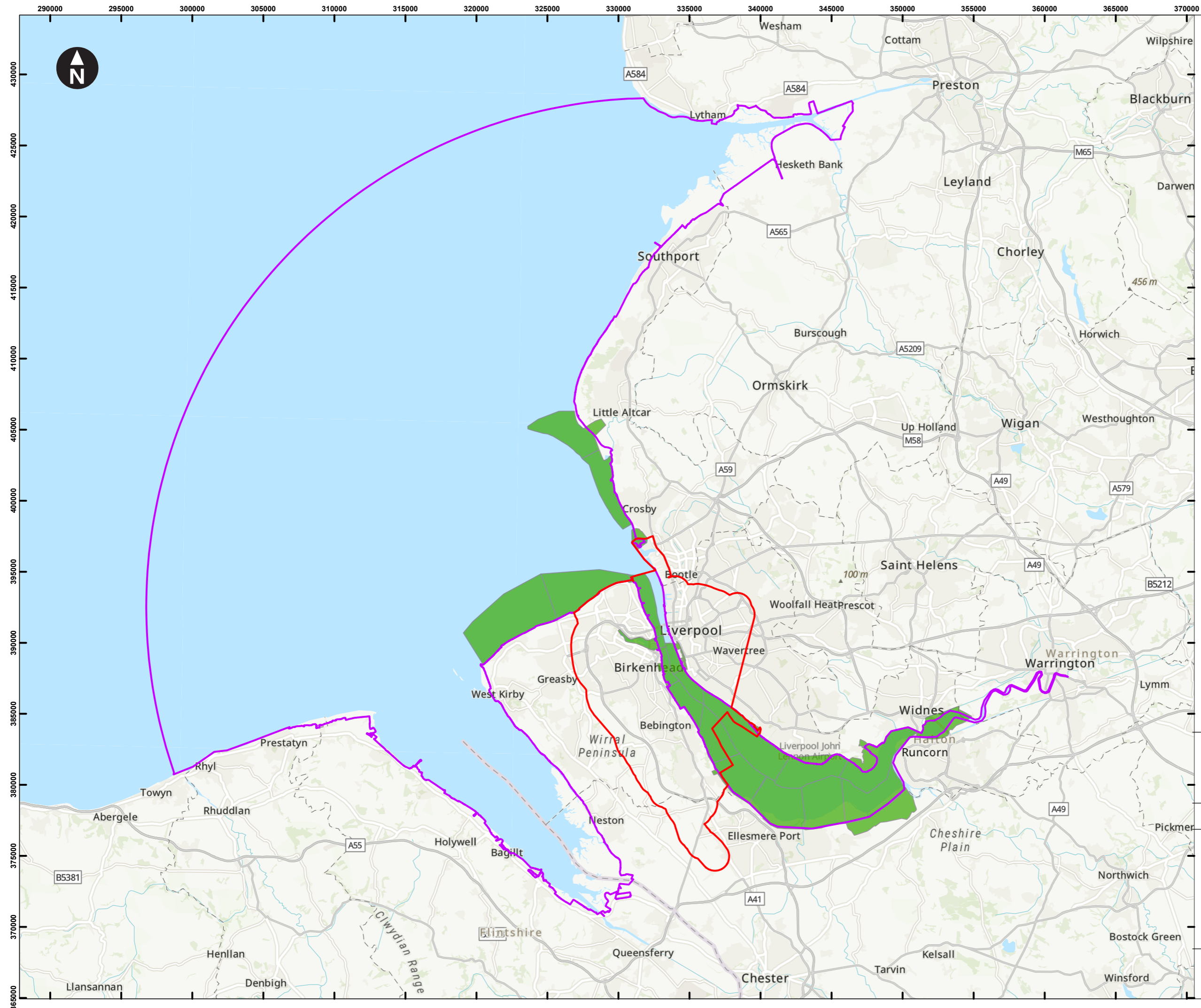
0 1 2 Kilometers
 Scale at A3: 1:250,000
 World Topographic Map: Esri UK, Esri, TomTom, Garmin, Foursquare, METI/NASA, USGS



Drawn: RM Checked: JS Approved: NT

Mersey Tidal Power Scoping Report Chapter 9: Marine and Intertidal Ornithology
Figure 9.1 Marine and Intertidal Ornithology Study Area

Document Number MTP-WSP-00-ZZ-MP-EN-0063-S8-P03-EIA Scoping-Ch9-Figure 9.1 Marine & Intertidal Ornithology Study area	13/09/2024
--	------------



Key

- Scoping Boundary
- Study Area
- Survey Areas

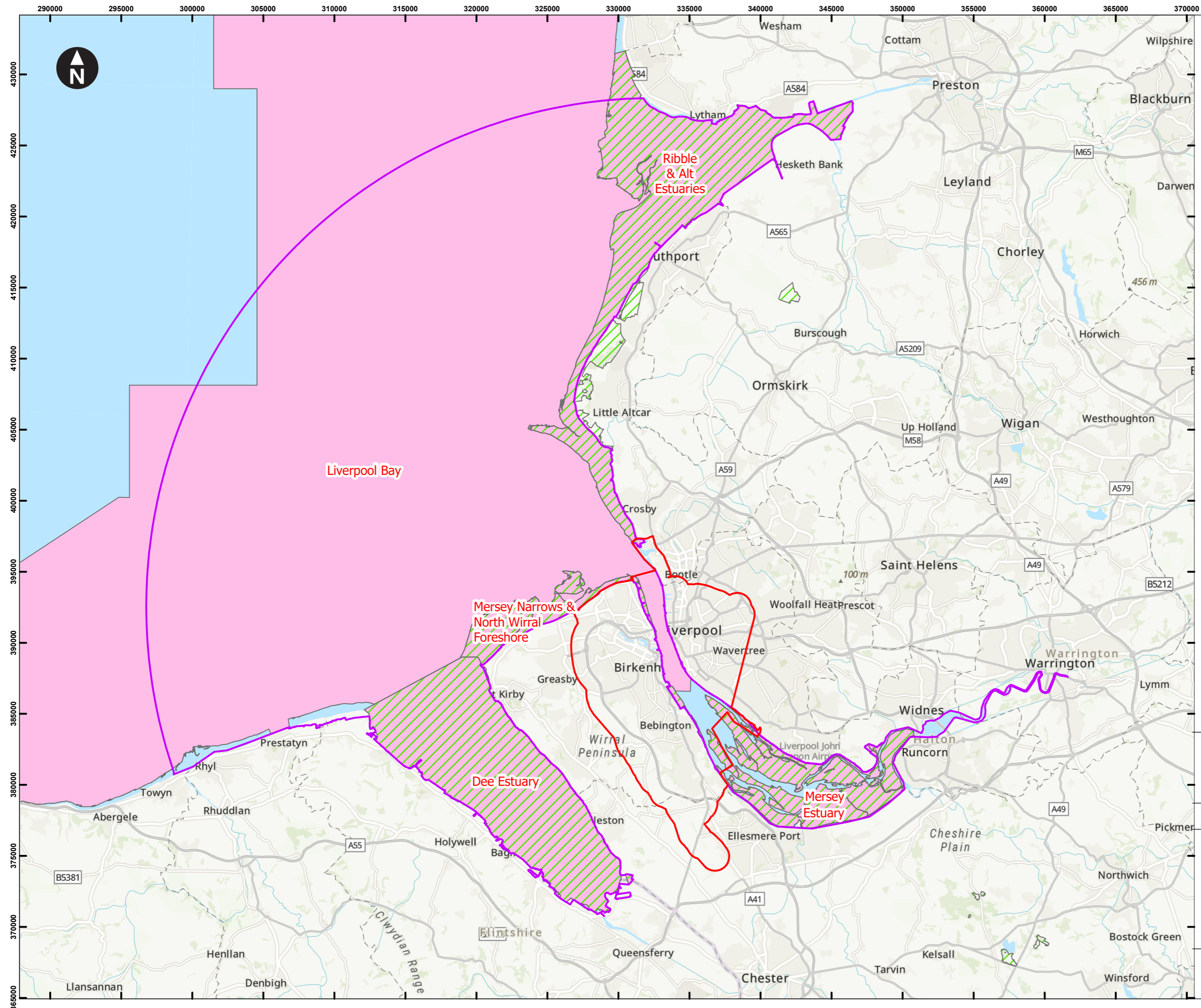
0 1 2 Kilometers
 Scale at A3: 1:250,000
 World Topographic Map: Esri UK, Esri, TomTom, Garmin, Foursquare, METI/NASA, USGS



Drawn: RM Checked: JS Approved: NT

Mersey Tidal Power Scoping Report Chapter 9: Marine and Intertidal Ornithology

Figure 9.2 Marine and Intertidal Ornithology Survey Areas



Key

- Scoping Boundary
- Study Area
- Ramsar Sites
- Special Protection Areas

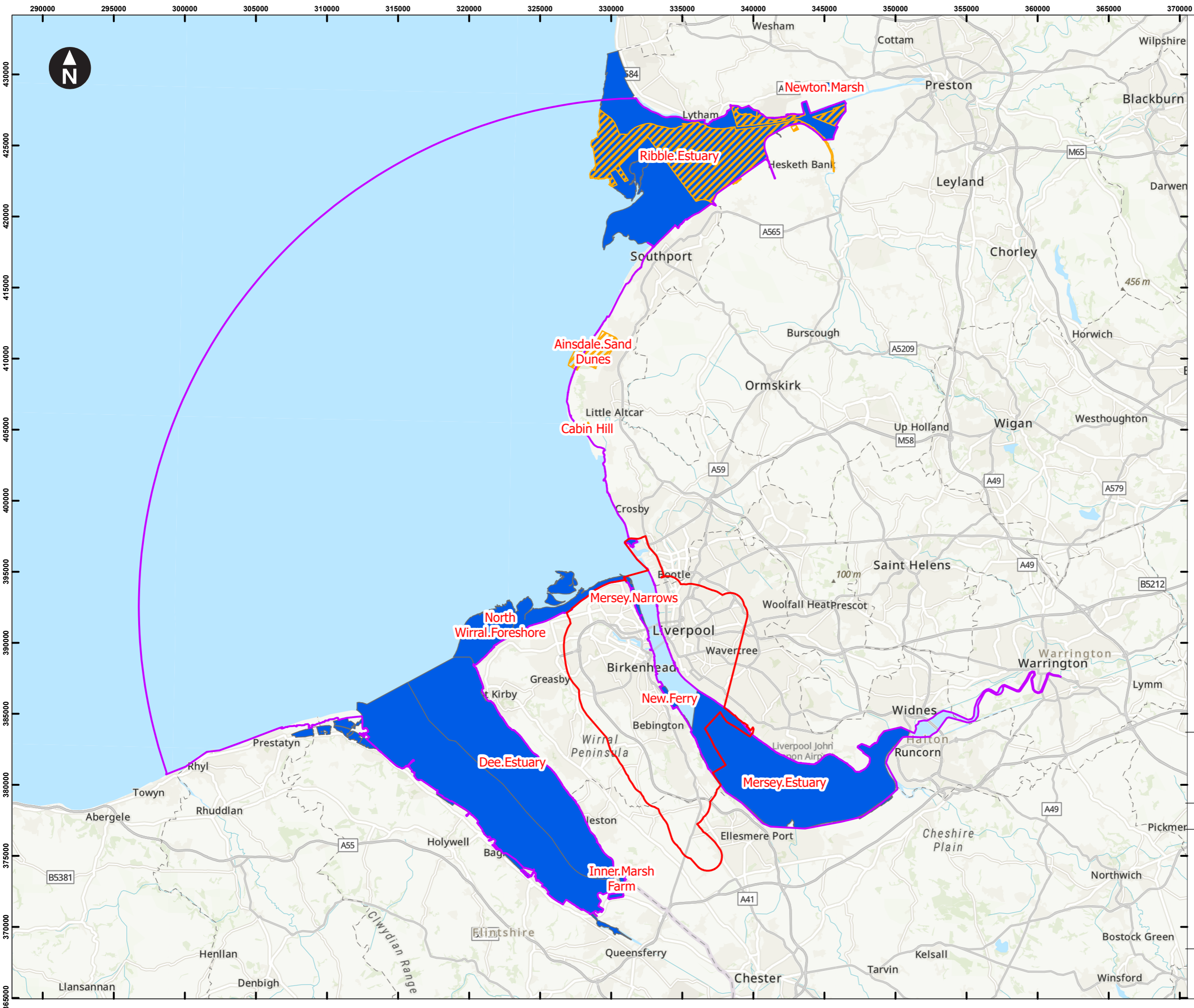
0 1 2 Kilometers
 Scale at A3: 1:250,000
 World Topographic Map: Esri UK, Esri, TomTom, Garmin, Foursquare, METI/NASA, USGS



Drawn: RM Checked: JS Approved: NT

Mersey Tidal Power Scoping Report Chapter 9: Marine and Intertidal Ornithology

Figure 9.3 Marine and Intertidal Ornithology SPA and Ramsar Sites



Key

- Scoping Boundary
- Study Area
- Sites of Special Scientific Interest
- National Nature Reserves

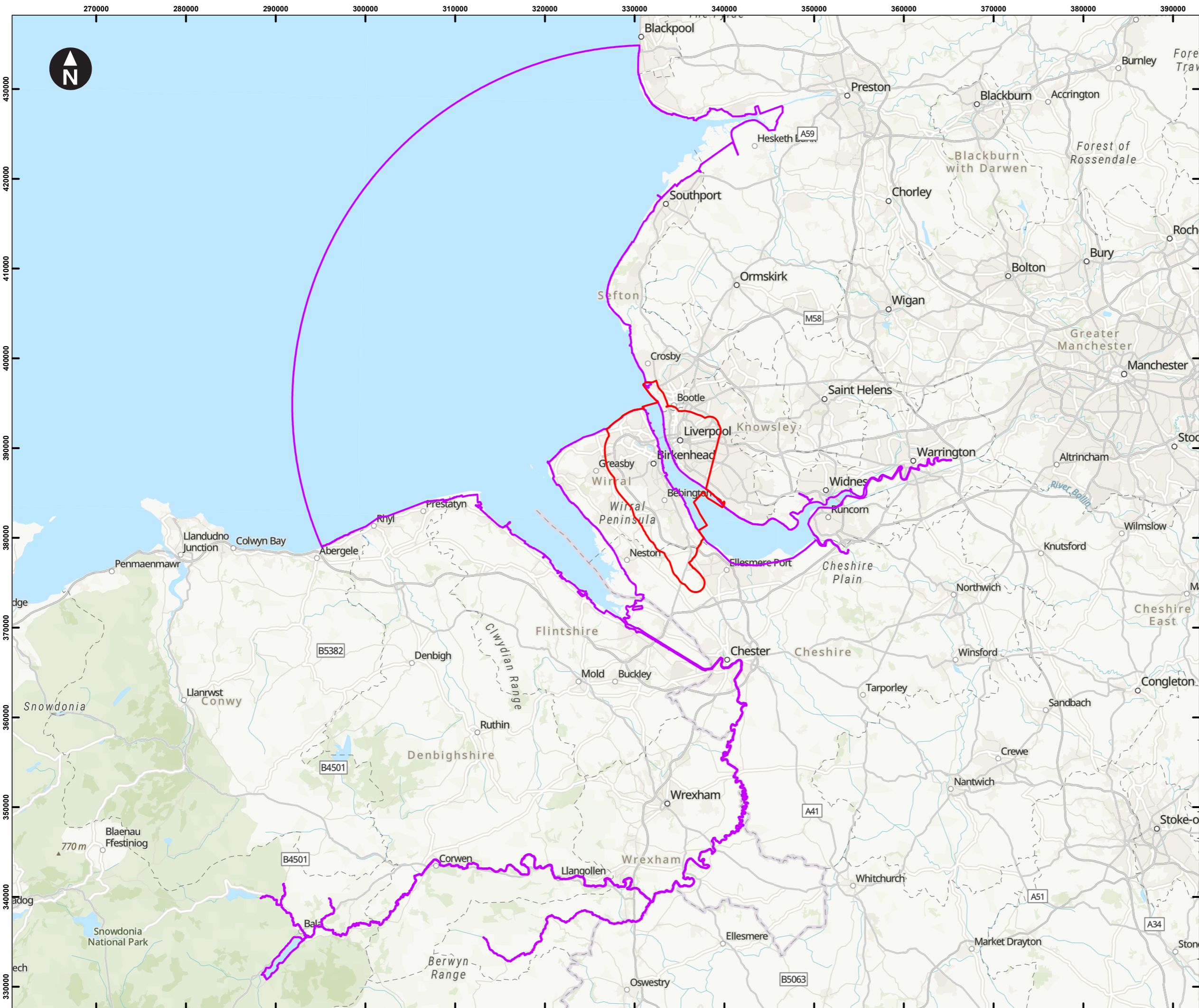
0 1 2 Kilometers
 Scale at A3: 1:250,000
 World Topographic Map: Esri UK, Esri, TomTom, Garmin, Foursquare, METI/NASA, USGS



Drawn: RM Checked: JS Approved: NT

Mersey Tidal Power Scoping Report Chapter 9: Marine and Intertidal Ornithology

Figure 9.4 Marine and Intertidal Ornithology SSSIs and NNR Sites



Key
 Scoping Boundary
 Study Area

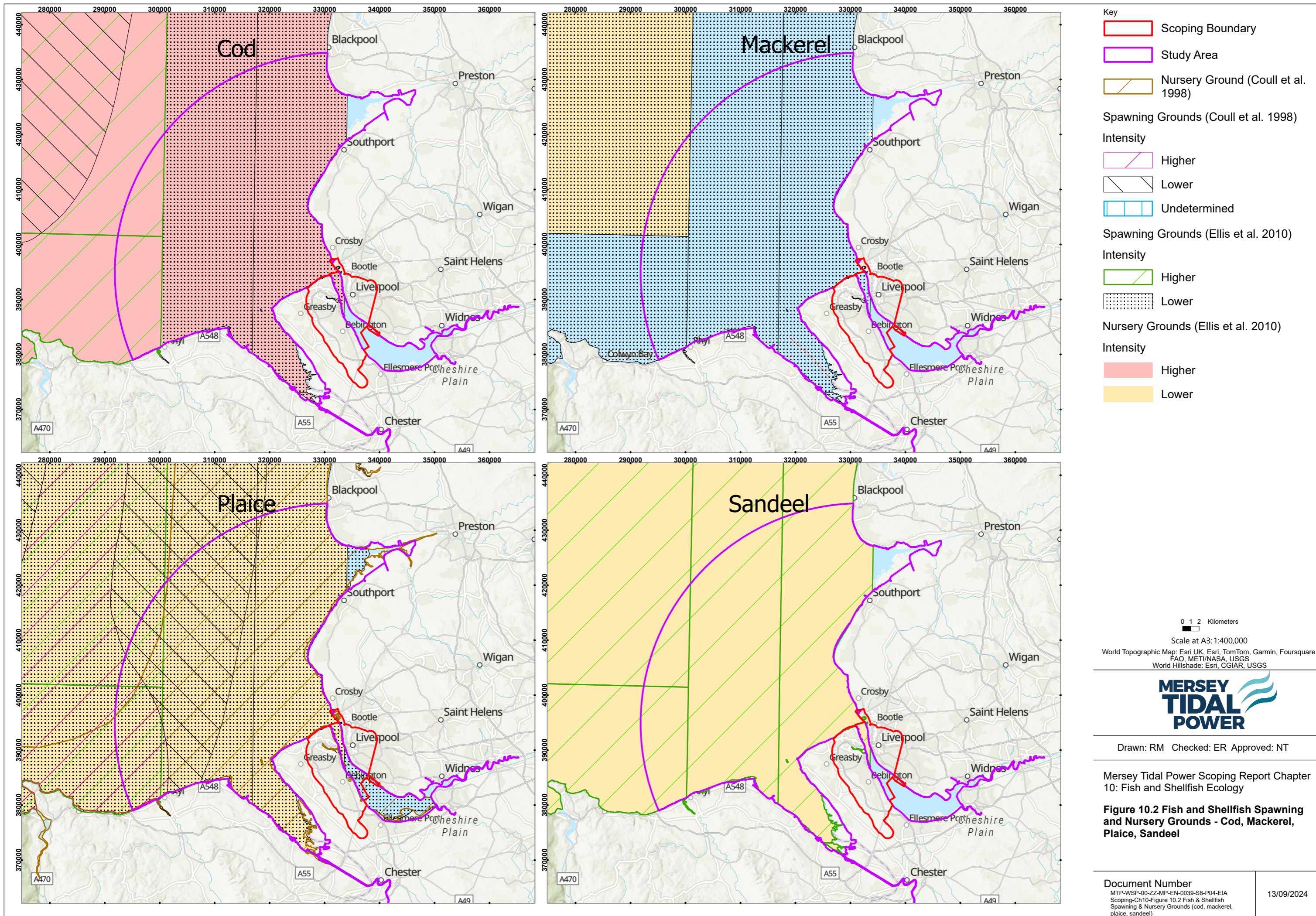
0 1 2 Kilometers
 Scale at A3: 1:400,000
 World Topographic Map: Esri UK, Esri, TomTom, Garmin, Foursquare, FAO, METI/NASA, USGS

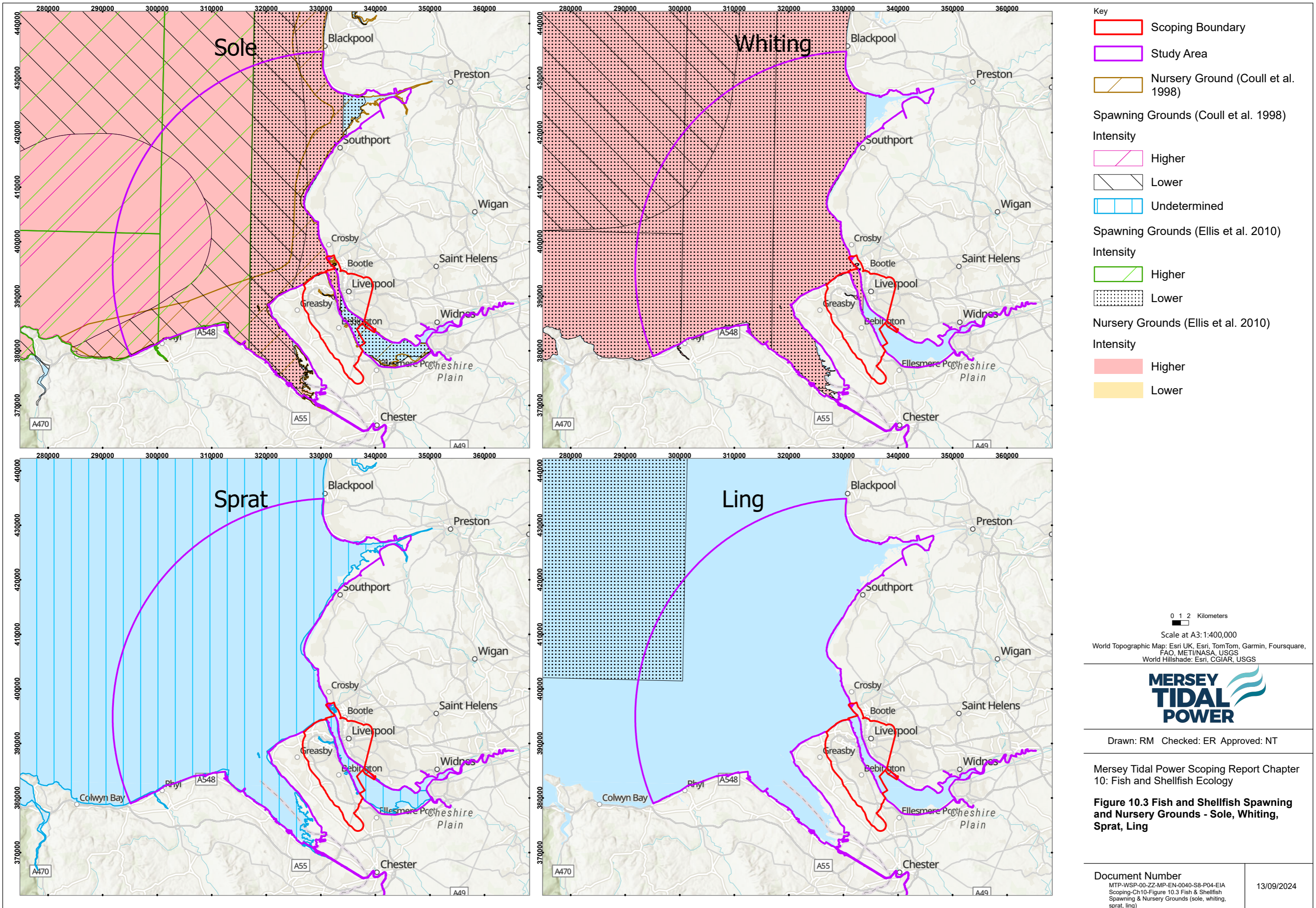


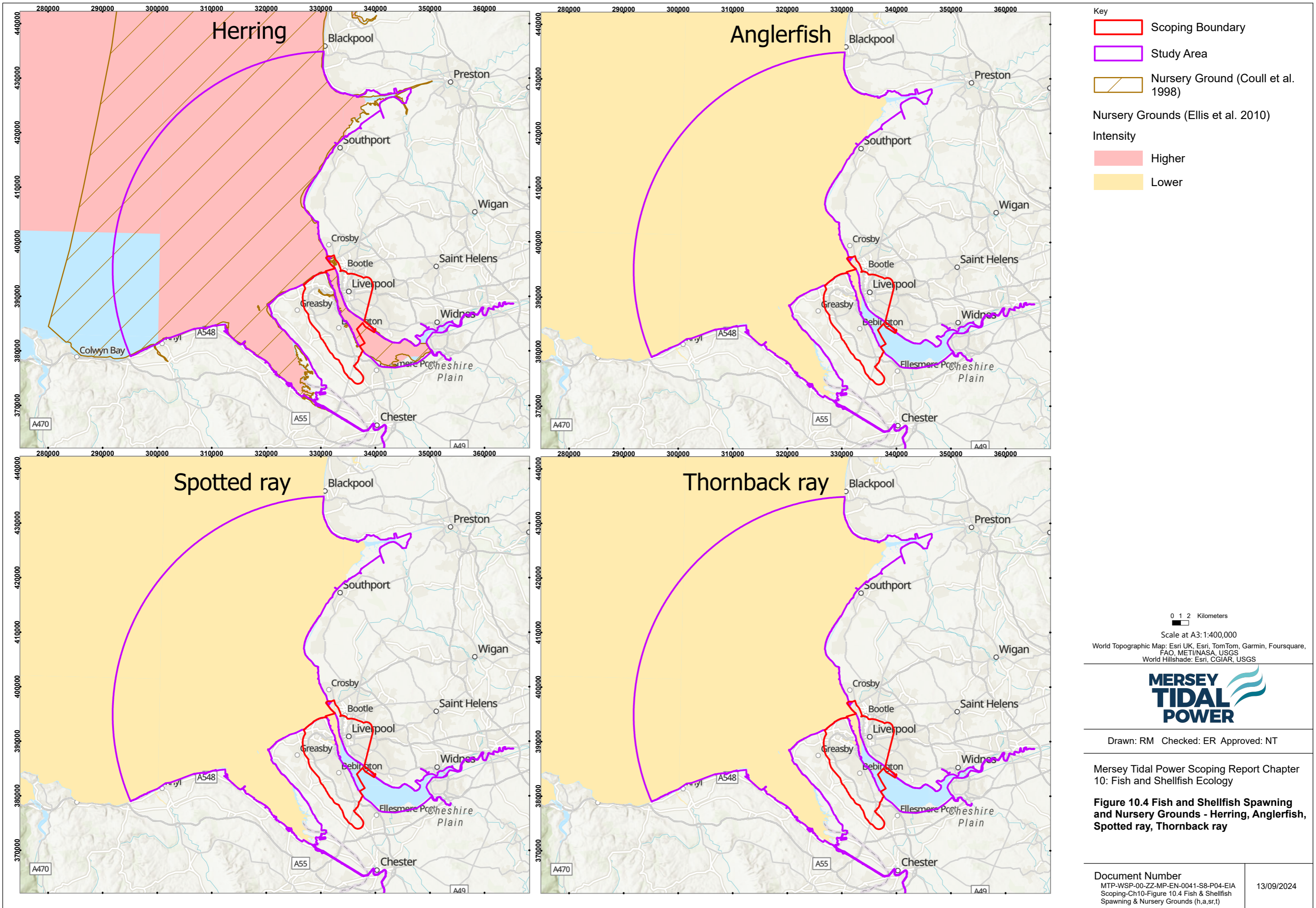
Drawn: RM Checked: ER Approved: NT

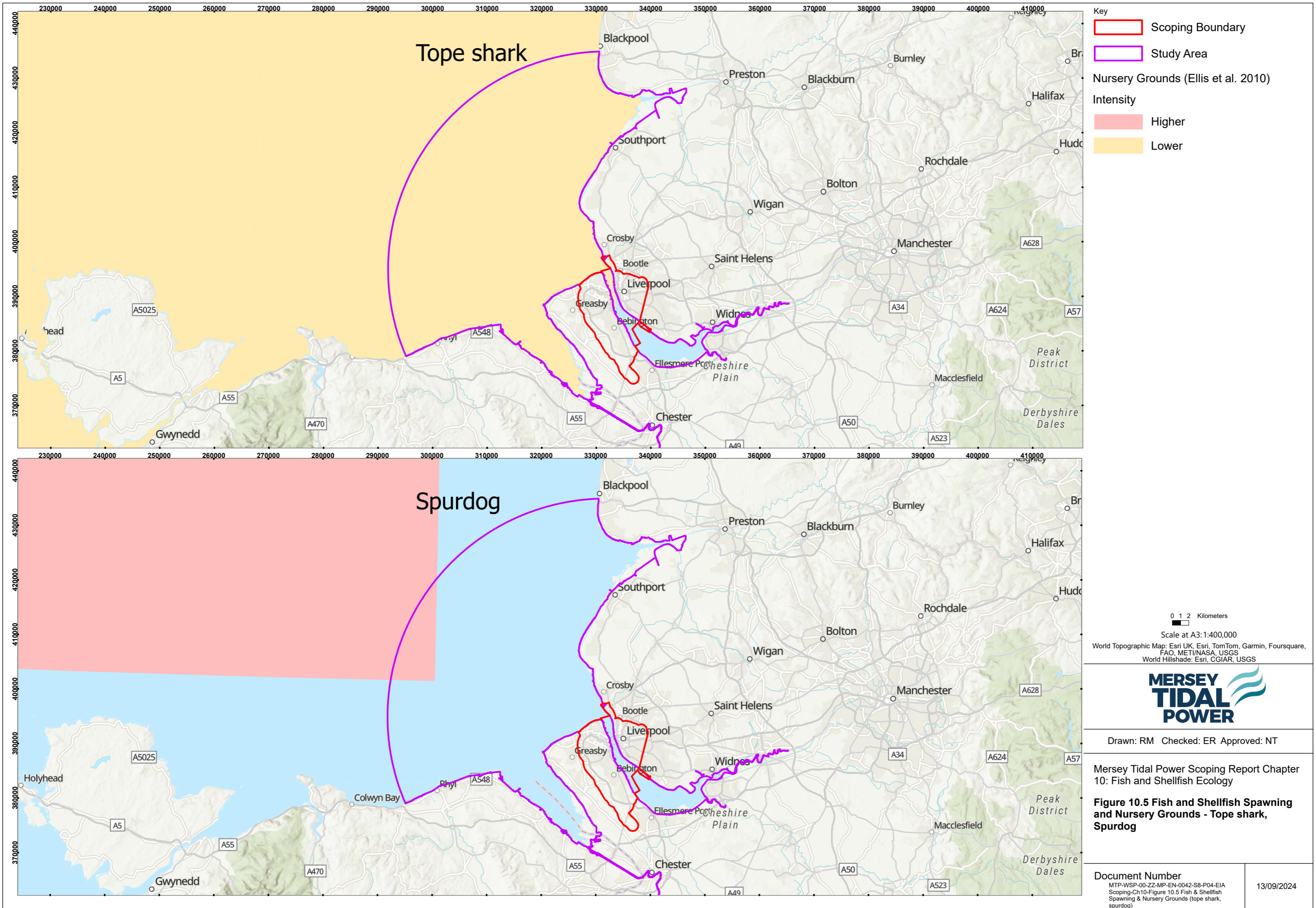
Mersey Tidal Power Scoping Report Chapter 10: Fish and Shellfish Ecology
Figure 10.1 Fish and Shellfish Study Area

Document Number MTP-WSP-00-ZZ-MP-EN-0038-S8-P03-EIA Scoping-Ch10-Figure 10.1 Fish & Shellfish Study Area	13/09/2024
--	------------









Key

- Scoping Boundary
- Study Area

Nursery Grounds (Ellis et al. 2010)

Intensity

- Higher
- Lower

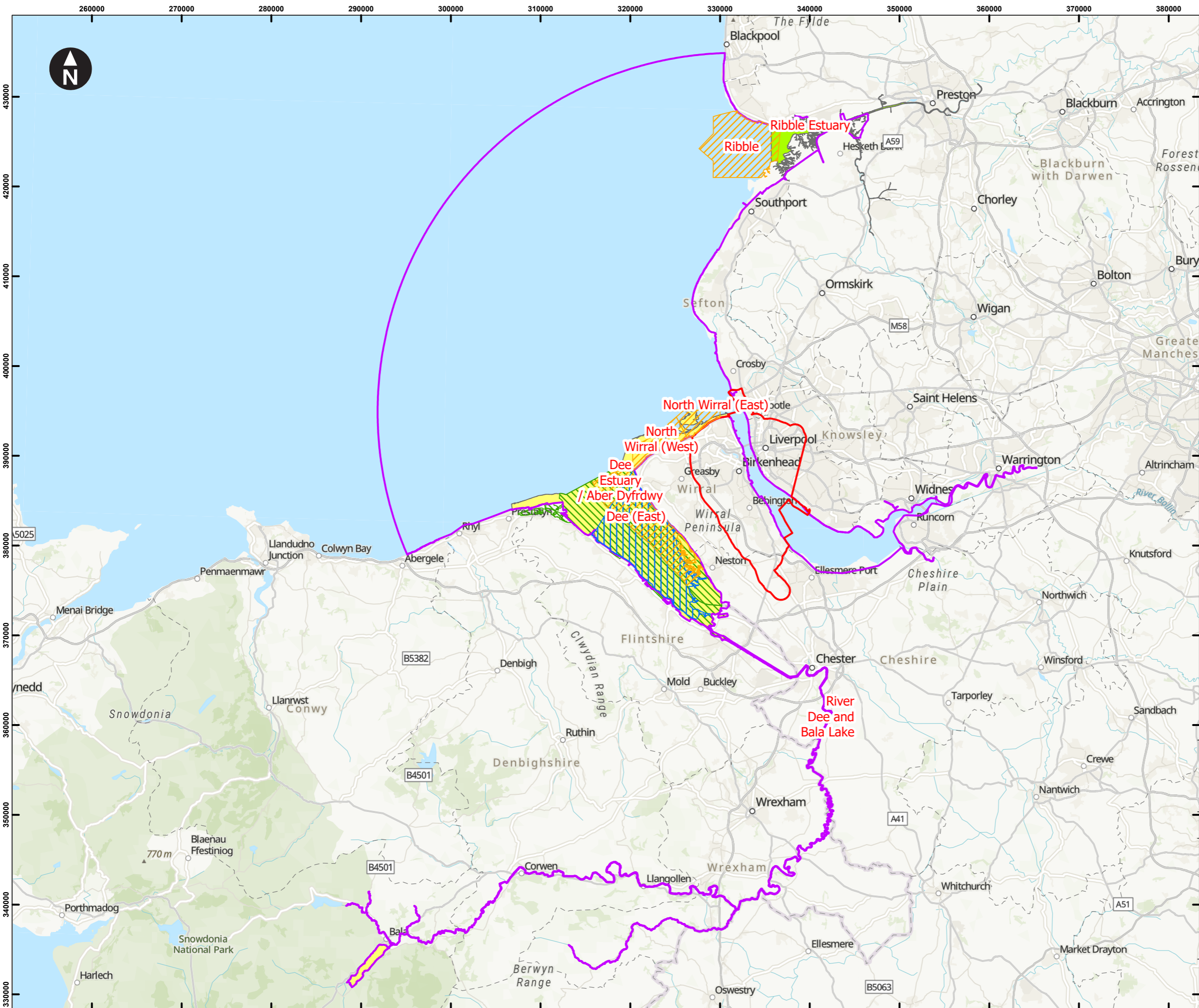
0 1 2 Kilometers
 Scale at A3: 1:400,000
 World Topographic Map: Esri UK, Esri, TomTom, Garmin, Foursquare, FAO, METI/NASA, USGS
 World Hillshade: Esri, CGIAR, USGS



Drawn: RM Checked: ER Approved: NT

Mersey Tidal Power Scoping Report Chapter 10: Fish and Shellfish Ecology

Figure 10.5 Fish and Shellfish Spawning and Nursery Grounds - Tope shark, Spurdog



- Key
- Scoping Boundary
 - Study Area
 - Shellfish Water Protected Areas
 - Marine Conservation Zones
 - Sites of Special Scientific Interest
 - Special Areas of Conservation
 - Welsh Bass Nursery Area

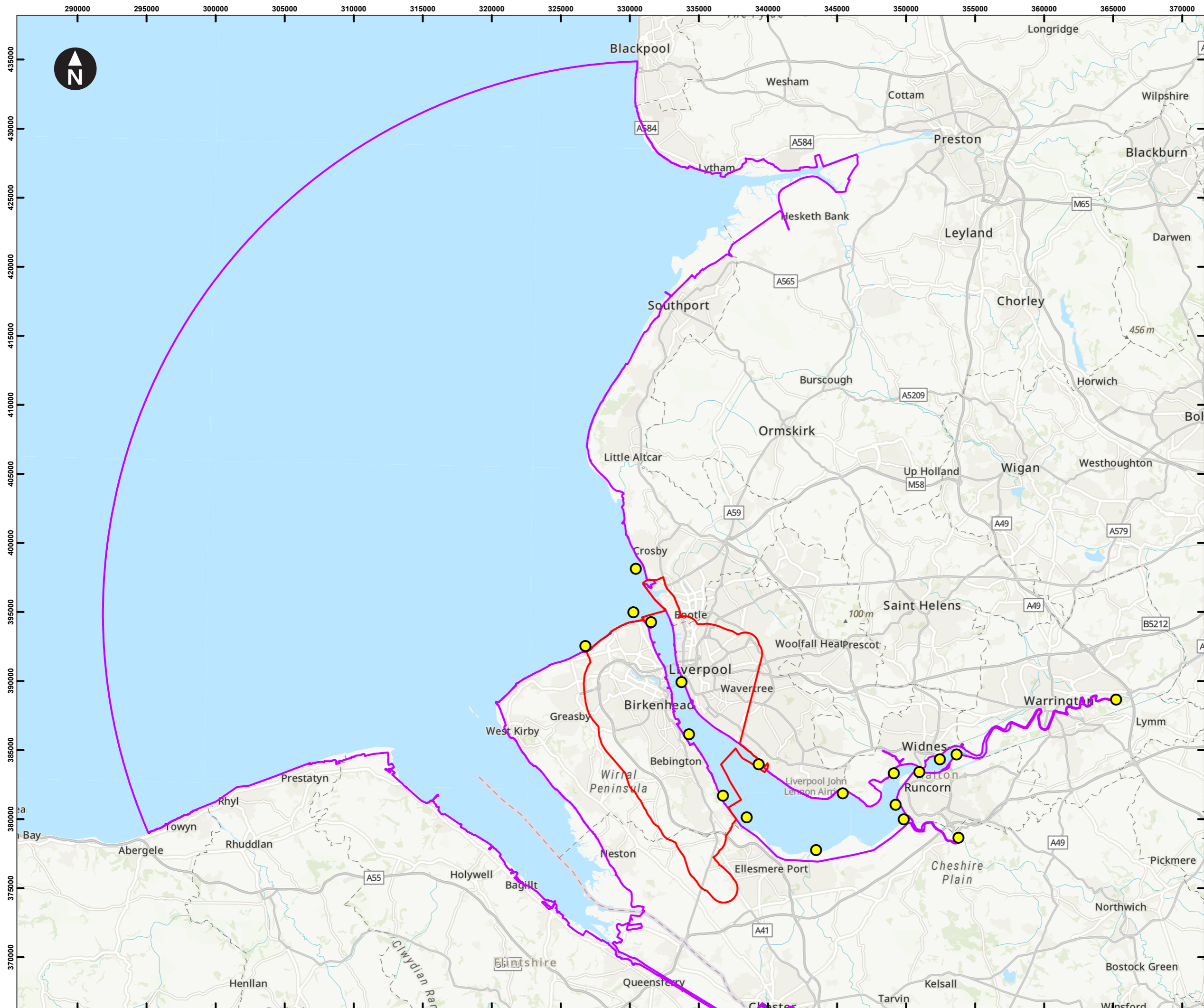
0 1 2 Kilometers
 Scale at A3: 1:400,000
 World Topographic Map: Esri UK, Esri, TomTom, Garmin, Foursquare, FAO, METI/NASA, USGS



Drawn: RM Checked: ER Approved: NT

Mersey Tidal Power Scoping Report Chapter 10: Fish and Shellfish Ecology

Figure 10.6 Designated Sites with Fish and Shellfish Features



Key

- Scoping Boundary
- Study Area
- Fish Survey Locations

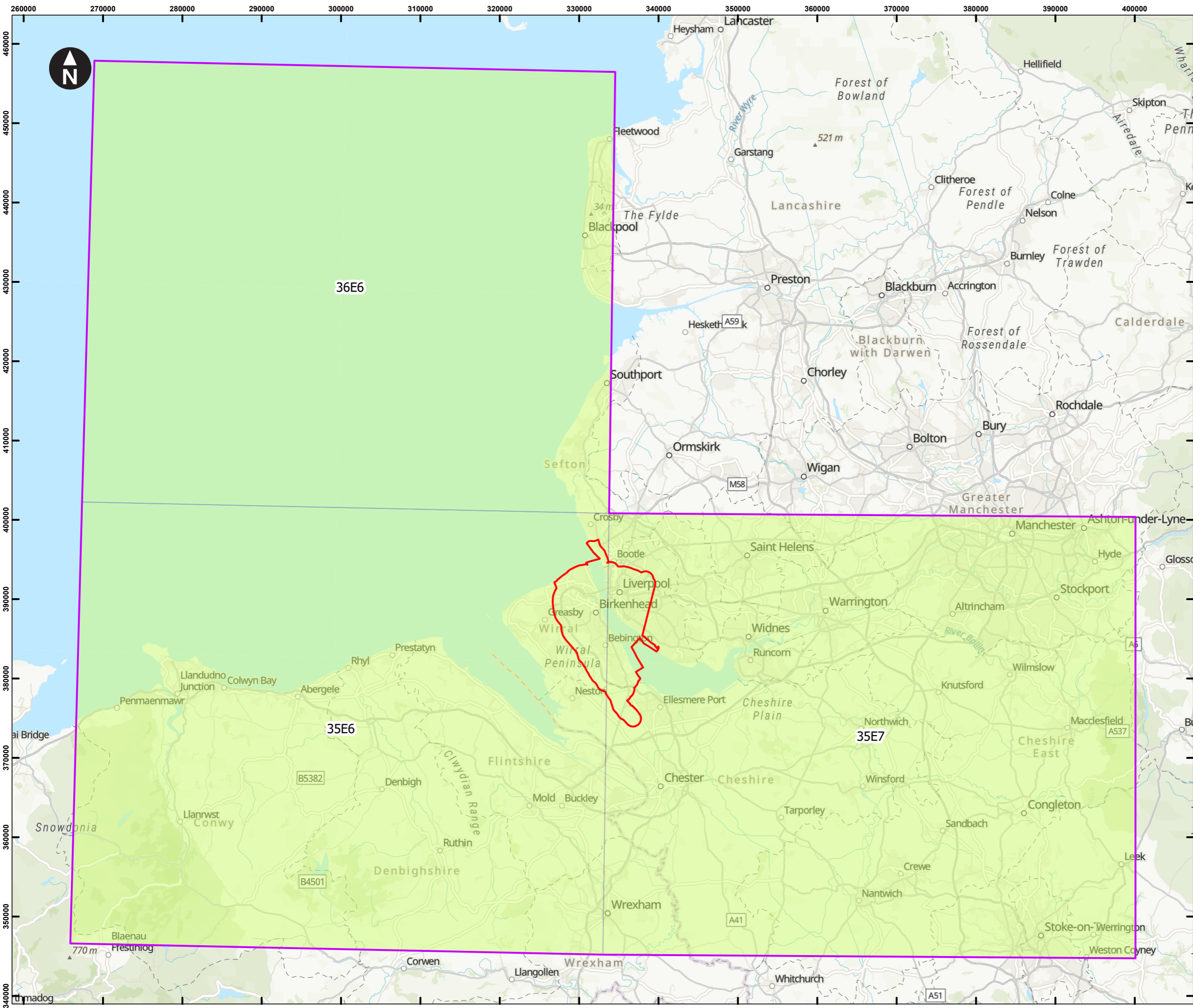
0 1 2 Kilometers
 Scale at A3: 1:260,000
 World Topographic Map: Esri UK, Esri, TomTom, Garmin, Foursquare, METI/NASA, USGS



Drawn: RM Checked: ER Approved: NT

Mersey Tidal Power Scoping Report Chapter 10: Fish and Shellfish Ecology

Figure 10.7 Fish and Shellfish Survey Locations



Key

- Scoping Boundary
- ICES Statistical Rectangles
- Study Area

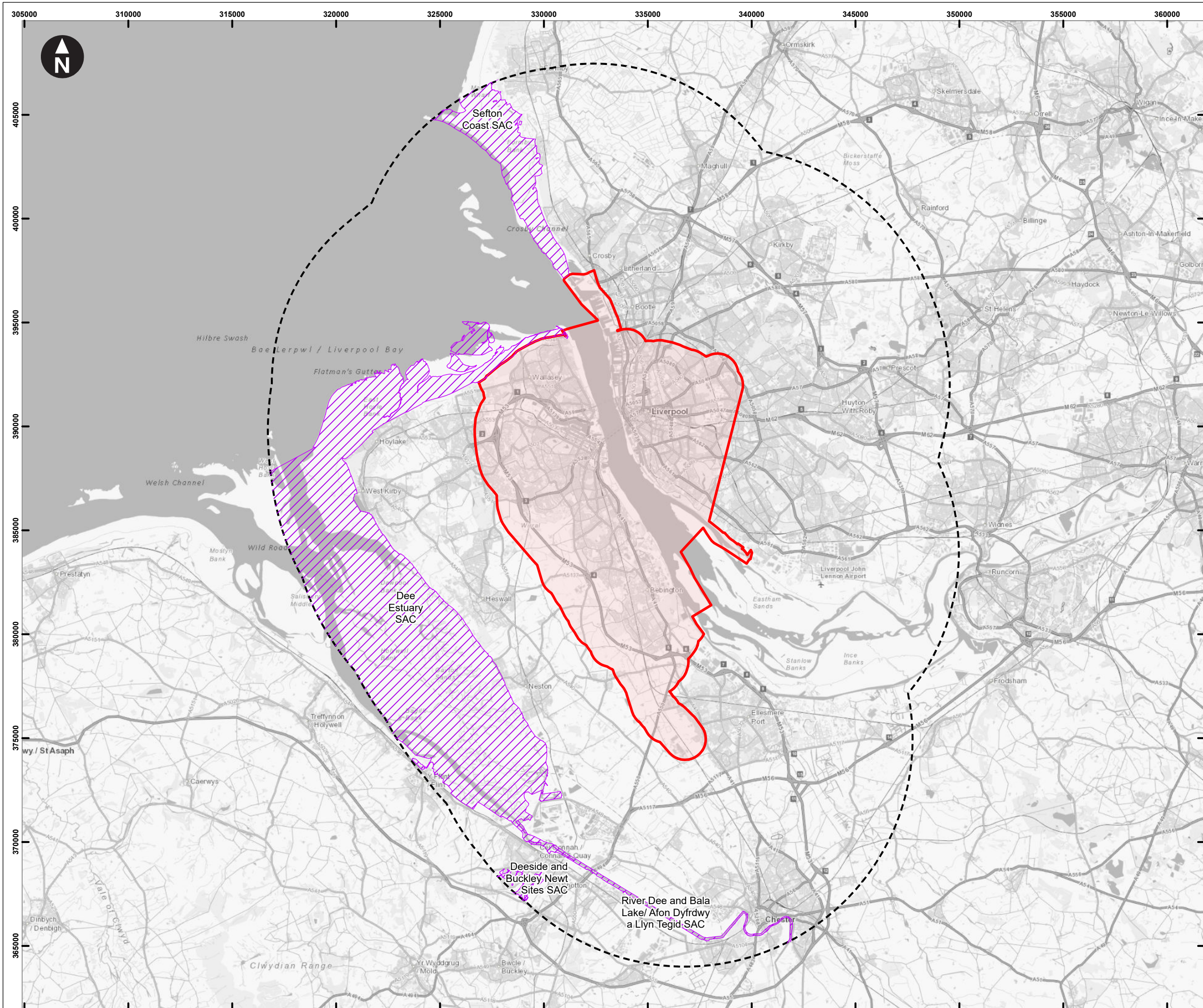
0 1 2 Kilometers
 Scale at A3: 1:450,000
 World Topographic Map: Esri UK, Esri, TomTom, Garmin, Foursquare, FAO, METI/NASA, USGS



Drawn: RM Checked: ER Approved: NT

Mersey Tidal Power Scoping Report Chapter 11: Commercial Fisheries

Figure 11.1 Commercial Fisheries Study Area



Key

- Scoping Boundary
- Scoping Boundary 10km buffer
- Special Area of Conservation (SAC)

0 1 2 Kilometers

Scale at A3: 1:175,000

OS Open Greyscale: Contains OS data © Crown Copyright and database right 2020

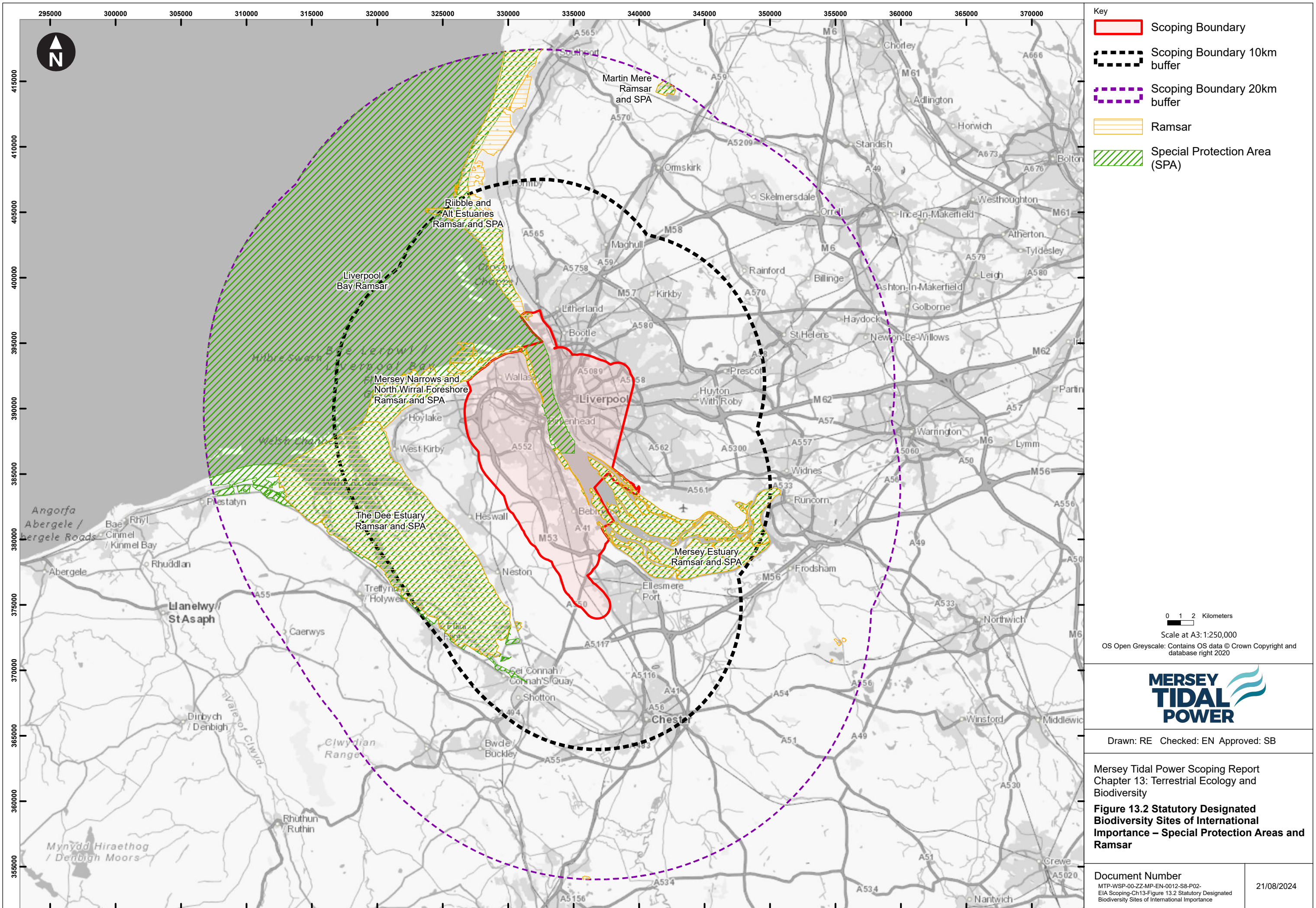


Drawn: RE Checked: MH Approved: CA

Mersey Tidal Power Scoping Report
Chapter 13: Terrestrial Ecology and Biodiversity

Figure 13.1 Statutory Designated Biodiversity Sites of International Importance - Special Areas of Conservation

Document Number	04/09/2024
MTP-WSP-00-ZZ-MP-EN-0011-S8-P02- EIA Scoping-Ch13-Figure 13.1 Statutory Designated Biodiversity Sites of International Importance	



Key

- Scoping Boundary
- Scoping Boundary 10km buffer
- Scoping Boundary 20km buffer
- Ramsar
- Special Protection Area (SPA)

0 1 2 Kilometers

Scale at A3: 1:250,000

OS Open Greyscale: Contains OS data © Crown Copyright and database right 2020

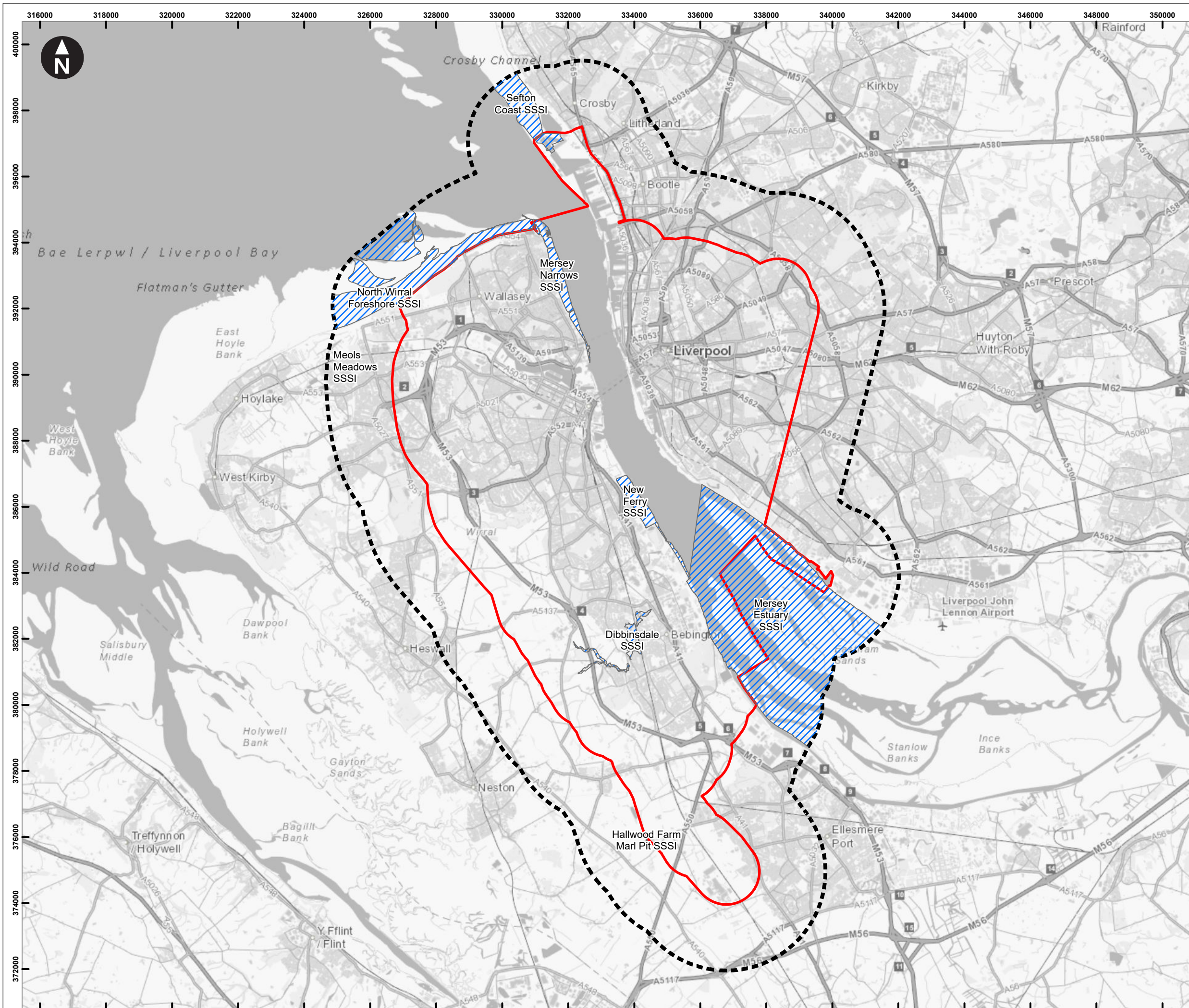


Drawn: RE Checked: EN Approved: SB

Mersey Tidal Power Scoping Report
Chapter 13: Terrestrial Ecology and Biodiversity

Figure 13.2 Statutory Designated Biodiversity Sites of International Importance – Special Protection Areas and Ramsar

Document Number <small>MTP-WSP-00-ZZ-MP-EN-0012-S8-P02- EIA Scoping-Ch13-Figure 13.2 Statutory Designated Biodiversity Sites of International Importance</small>	21/08/2024
---	------------



Key

- Scoping Boundary
- Scoping Boundary 2km buffer
- Site of Special Scientific Interest (SSSI)

0 1 2 Kilometers
 Scale at A3: 1:110,000
 OS Open Greyscale: Contains OS data © Crown Copyright and database right 2020



Drawn: RE Checked: MH Approved: CA

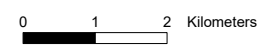
Mersey Tidal Power Scoping Report
 Chapter 13: Terrestrial Ecology and Biodiversity
Figure 13.3 Statutory Designated Biodiversity Sites of National Importance

Document Number <small>MTP-WSP-00-ZZ-MP-EN-0013-S8-P02- EIA Scoping-Ch13-Figure 13.3 Statutory Designated Biodiversity Sites of National Importance</small>	21/08/2024
--	------------



Key

- Scoping Boundary
- Scoping Boundary 1km buffer
- Local Nature Reserve (LNR)



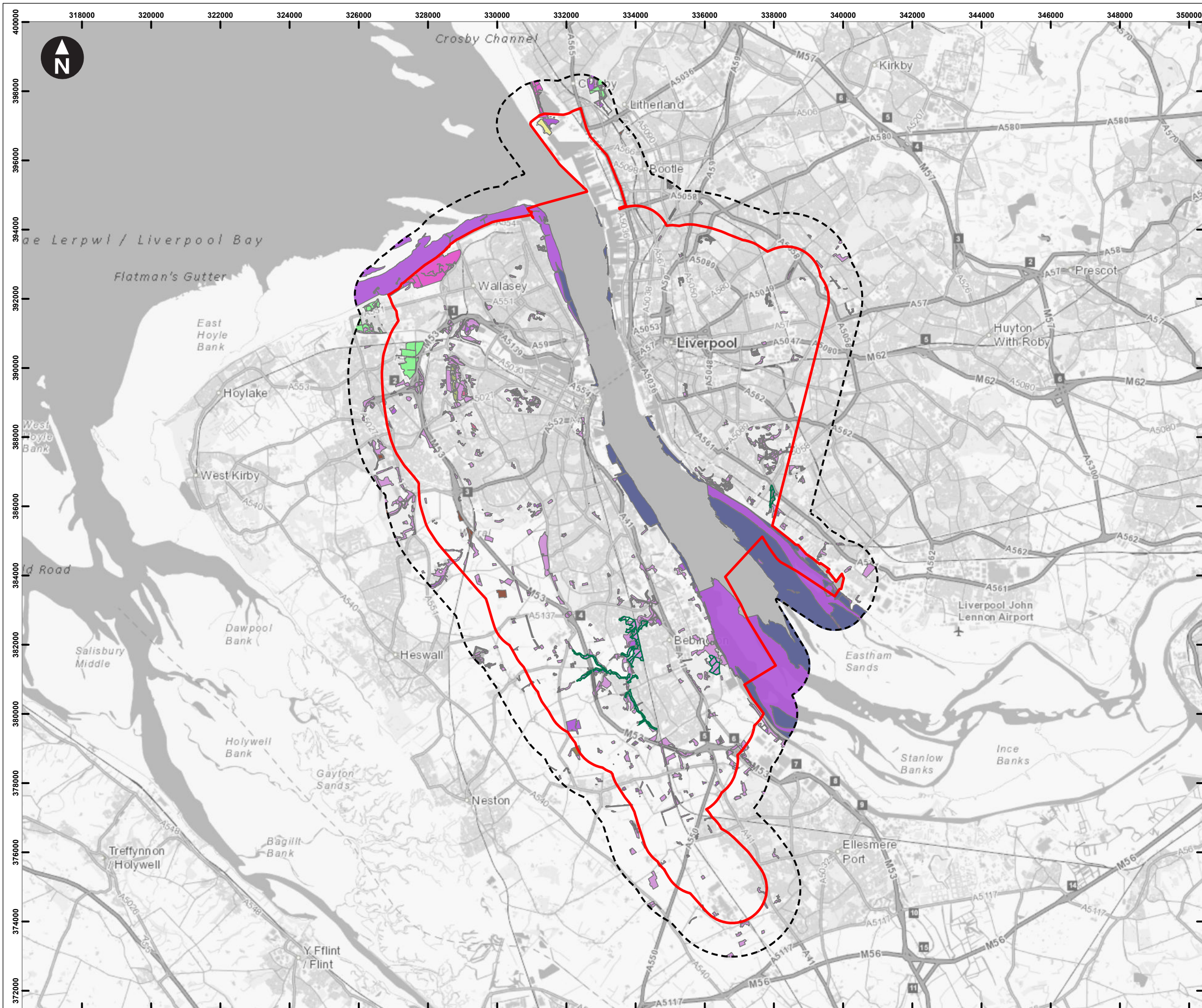
Scale at A3: 1:105,000
 OS Open Greyscale: Contains OS data © Crown Copyright and database right 2020



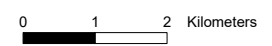
Drawn: RE Checked: MH Approved: CA

Mersey Tidal Power Scoping Report
 Chapter 13: Terrestrial Ecology and Biodiversity
Figure 13.4 Statutory Designated Biodiversity Sites of Local Importance

Document Number MTP-WSP-00-ZZ-MP-EN-0014-S8-P02- EIA Scoping-Ch13-Figure 13.4 Statutory Designated Biodiversity Sites of Local Importance	21/08/2024
---	------------



- Key**
- Scoping Boundary
 - Scoping Boundary 1km buffer
 - Ancient Woodland (AW)
- Priority Habitat Inventory**
- Coastal and floodplain grazing marsh
 - Coastal sand dunes
 - Coastal sand dunes, Deciduous woodland
 - Deciduous woodland
 - Good quality semi improved grassland
 - Lowland dry acid grassland
 - Lowland fens
 - Lowland heathland
 - Lowland meadows
 - Mudflats
 - No main habitat but additional habitats present
 - Ponds
 - Reedbeds
 - Saline lagoons
 - Traditional orchard



Scale at A3: 1:105,000
 OS Open Greyscale: Contains OS data © Crown Copyright and database right 2020



Drawn: RE Checked: MH Approved: CA

Mersey Tidal Power Scoping Report
 Chapter 13: Terrestrial Ecology and Biodiversity
Figure 13.5 Ancient Woodland and Habitats of Principal Importance

Document Number MTP-WSP-00-ZZ-MP-EN-0015-S8-P02- EIA Scoping-Ch13-Figure 13.5 Ancient Woodland & Habitats of Principal Importance	21/08/2024
--	------------

ITS TIME  FOR TIDAL